

## Section 4.8

### Newton's Method

# Newton's Method

Newton's Method is a procedure which uses successive tangent lines to find a numerical approximation to the equation  $f(x) = 0$ .

Numerical approximations are important as it is often impossible to find exact solutions.

by Joseph Phillip Brennan  
Jila Niknejad

# Polynomials

You're used to being able to solve equations because you haven't yet experienced the pain of finding the roots of higher order polynomials.

The quadratic equation is not too bad...

$$ax^2 + bx + c = 0 \quad \Rightarrow \quad x = \frac{-b \pm \sqrt{b^2 - 4ac}}{2a}$$

but what about higher-degree polynomials?

$$\begin{aligned} ax^3 + bx^2 + cx + d = 0 &\quad \Rightarrow \quad x = ? \\ ax^4 + bx^3 + cx^2 + dx + e = 0 &\quad \Rightarrow \quad x = ? \end{aligned}$$

There exist (complicated!) formulas for the **cubic** and the **quartic**, but **not for degrees 5 and higher** (as proved by Abel in 1824).

# Newton's Method

Newton's Method uses **tangent lines** to find **better and better** approximations of a value  $c$  which satisfies  $f(c) = 0$ .

(1) Guess a value of the root  $c$ . Call this guess  $x_0$ .

(2) Take the tangent line of  $f$  at  $x_0$

$$y = f(x_0) + f'(x_0)(x - x_0)$$

(3) Unless horizontal, the tangent line will cross the  $x$ -axis at some point,  $(x_1, 0)$ .

$$0 = f(x_0) + f'(x_0)(x_1 - x_0) \quad \Rightarrow \quad x_1 = x_0 - \frac{f(x_0)}{f'(x_0)}$$

Repeat this process to find a new approximation of the root  $c$ :

$$x_2 = x_1 - \frac{f(x_1)}{f'(x_1)}$$

## Newton's Method

To approximate a root of  $f(x)$ , choose an initial value  $x_0$  which is **not** a critical point. Generate successive approximations of the root through the equation

$$x_{n+1} = x_n - \frac{f(x_n)}{f'(x_n)}$$

**Example 1:** Approximate  $\sqrt{5}$  using  $f(x) = x^2 - 5$  and  $x_0 = 2$ .

by Joseph Phillip Brennan  
Jila Niknejad

## Example 2:

Approximate a root of  $f(x) = x^5 - x - 1$  using Newton's Method.



Sometimes, Newton's Method does not succeed in approximating a root.

(I) If  $x_0$  is a critical point, then Newton's Method fails at step 1.

If  $f'(x_0) = 0$  or does not exist, then  $x_1 = x_0 - \frac{f(x_0)}{f'(x_0)}$  is not defined.

(II) If the graph of  $f$  is very complicated, Newton's Method can take a long time to find a root, or can even bounce back and forth around the graph without ever converging.

(III) Sometimes Newton's Method approaches a horizontal asymptote.

Jila Niknejad

## Example 3:

Let  $f(x) = \frac{\ln(x)}{x}$  and take  $x_0 = 4$ . Note that  $f'(x) = \frac{1 - \ln(x)}{x^2}$ .

$$x_1 \approx 18.355$$

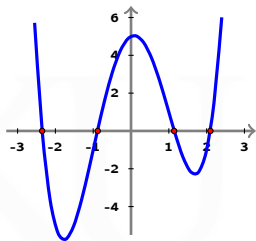
$$x_2 \approx 46.32$$

$$x_3 \approx 108.98$$

If your first choice for  $x_0$  does not work, choose a different  $x_0$ !



If  $f$  has multiple roots, then different choices of  $x_0$  may lead to different roots.



**Example 4:**  $f(x) = x^4 - 6x^2 + x + 5$

$$f'(x) = 4x^3 - 12x + 1$$

$$x_0 = 1$$

$$x_1 \approx 1.1429$$

$$x_2 \approx 1.1446$$

$$x_3 \approx 1.1446$$

Closing in on the root  $c \approx 1.14465$

$$x_0 = 0$$

$$x_1 = -5$$

$$x_2 \approx -3.918$$

$$x_3 \approx -3.167$$

Closing in on the root  $c \approx -2.34943$